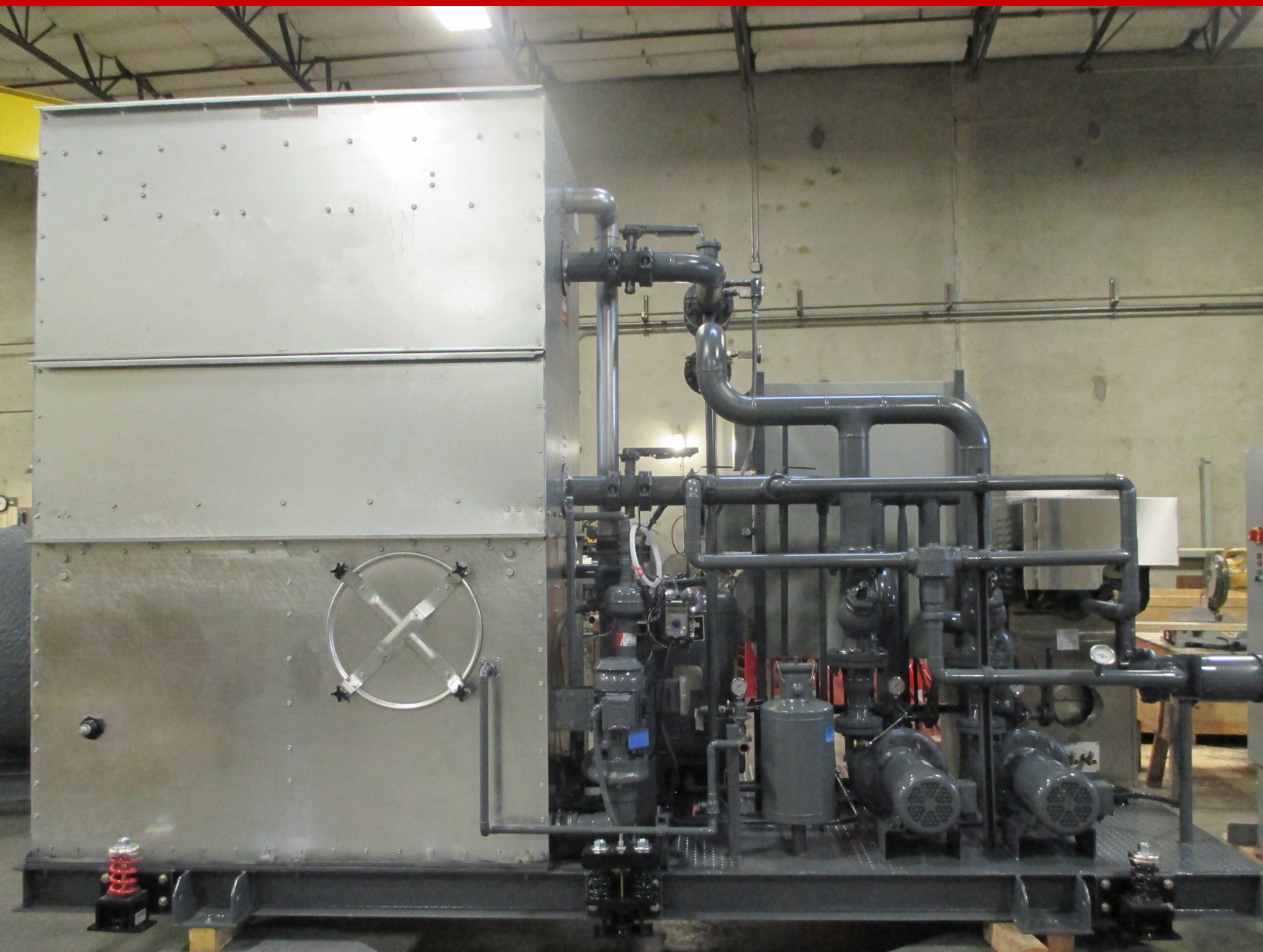


FlowTHERMTM Systems

Water Source Heat Pump



Water Source Heat Pump

FlowTherm Process Water Source Heat Pump Systems are the central plant of a water source heat pump loop system. Applications for FlowTherm Process Water Source Heat Pump Systems include schools, retail, multi-family housing, municipal, institutional and manufacturing facilities.

FlowTherm Water Source Heat Pump Systems Options & Data:

- System include a closed loop fluid cooler, boiler(s), condenser water circulating pumps, air separator, expansion tank and chemical treatment for the fluid cooler and the condenser water loop.
- A large range of available capacities with system as small as 50 Tons and exceeding 500 tons.
- Condensing boiler, high efficiency boilers and multiple boilers are available.
- Alternate heat sources such as steam or electric boilers are available.
- On larger systems cooling towers with plate and frame heat exchangers are provided.
- Pump options include frame mounted end suction pumps, split case pumps, close coupled pumps and in-line pumps.
- Systems include an air separator, expansion tank, make-up water and chemical treatment for the fluid cooler and condenser water loop.
- Fully integrated controls are available including VFD's, digital controllers and PLC's with integration capabilities to the building management system (BMS).
- All systems are UL listed and fully tested at our manufacturing facility.

Have Questions? We're here to help.

FlowTherm Systems has a highly trained staff of representatives, designers, and engineers to help you with the right system for your project. Contact us and we will connect you with the right team member.

FlowTherm Systems

2293 Tripaldi Way

Hayward, CA 94545

(510) 293-1993

www.flowtherm.com