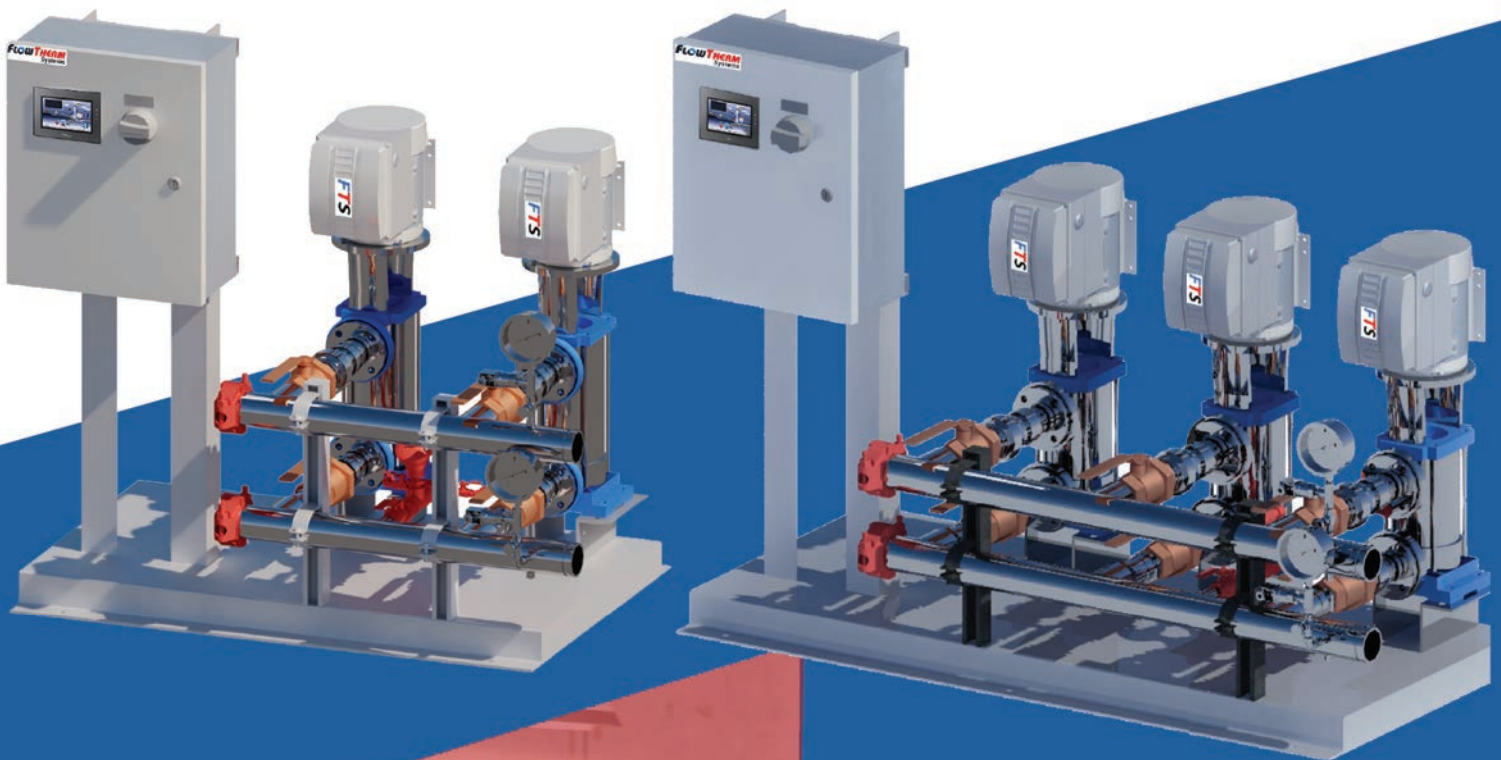


NANOWATT IE5 BOOSTER

INCREASED ENERGY SAVINGS – LOW MAINTENANCE – ULTRA PREMIUM EFFICIENT



History Of



In 1970, noticing a need for pre-fabricated engineered equipment, our parent company CHC began a manufacturing division named FlowTherm Systems™ that utilizes many of the components built by the equipment manufacturers we represent. These pre-engineered packaged systems provide a unique product to our industry that have been enjoyed tremendously and widely accepted in the marketplace. To further our commitment to quality, Flowtherm Systems received Underwriters Laboratories (UL) approval status in 1998, has since received IAPMO, NSF/ANSI 61 certification, and approval by the City of Los Angeles. The UL and IAPMO listing provides nationally recognized 3rd party quality assurance which provides a strong specification tool that assures our customers of a product that is built to rigid specifications and code compliance. In 2009, the FlowTherm division was expanded with the addition of a 2,400 sq.ft. work space for engineers, CAD designers, project management, and administration. Now with over 45 years of proven system application experience, FlowTherm Systems™ is a leading supplier of packaged systems for pumping and heat transfer applications.



About The Nanowatt

About The FlowTherm Systems Nanowatt

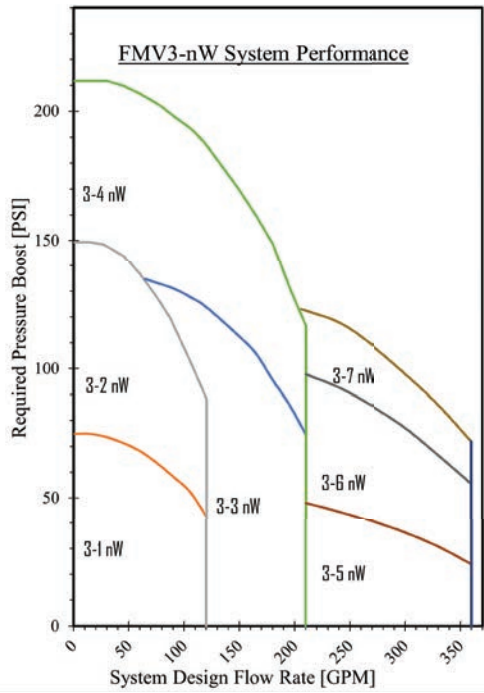
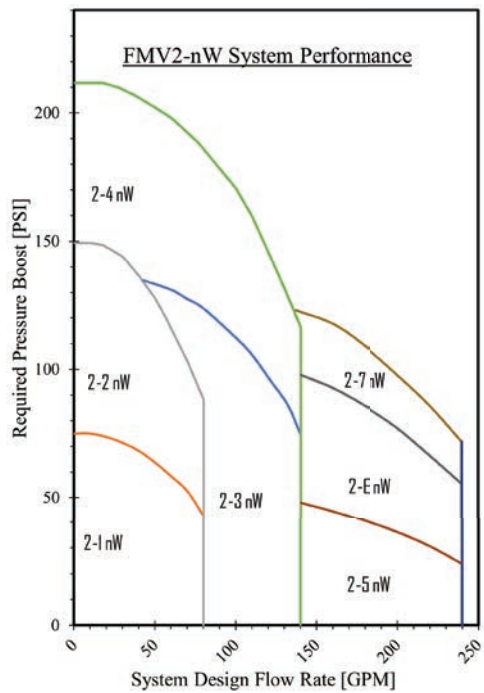
Flowtherm Nanowatt series of pressure boosters feature the latest motor technology; Class IE5 EC motors which combines synchronous reluctance and permanent magnet technologies. The result is a system which can reduce energy consumption by up to 20%. The motors and VFD are both IP54 rated which are suitable for indoor/outdoor use.

Standard construction features include Sch.10 304SS manifolds, formed steel base frame, and space saving Goulds R-Style ESV multi-stage pumps. The result is a compact, energy efficient, and cost-effective system guaranteed to perform. All packages are UL Listed and certified to NSF/ANSI 61 & NSF/ANSI 372.

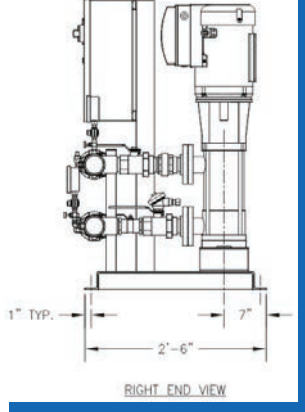
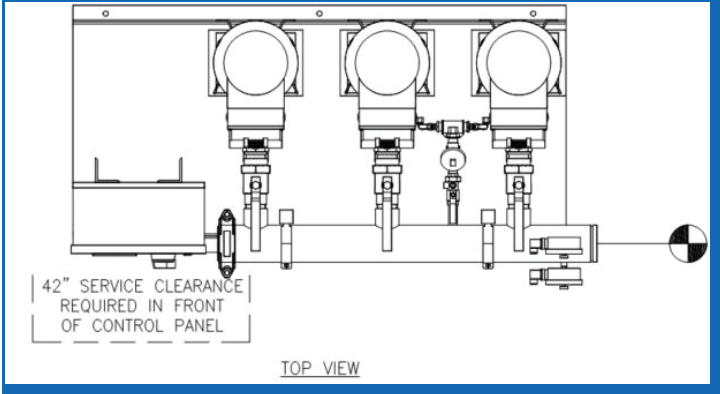
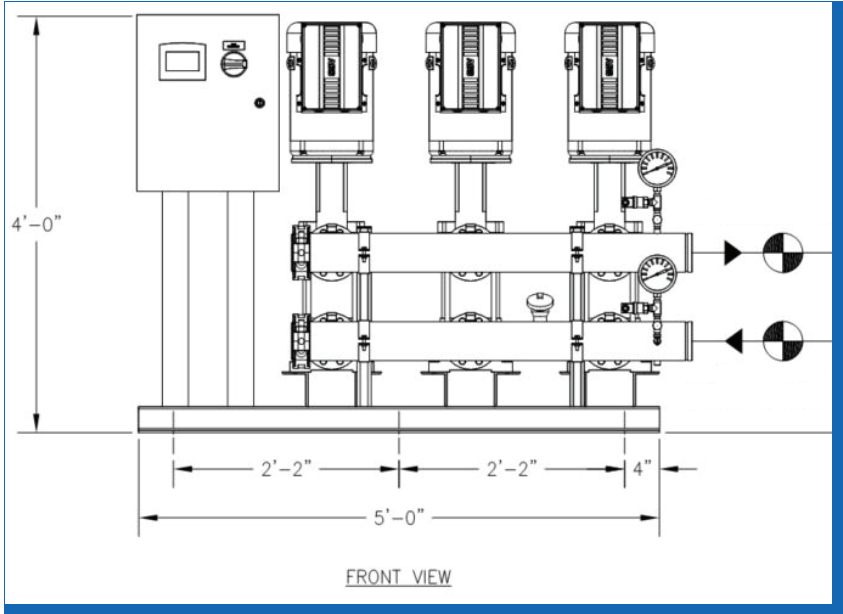
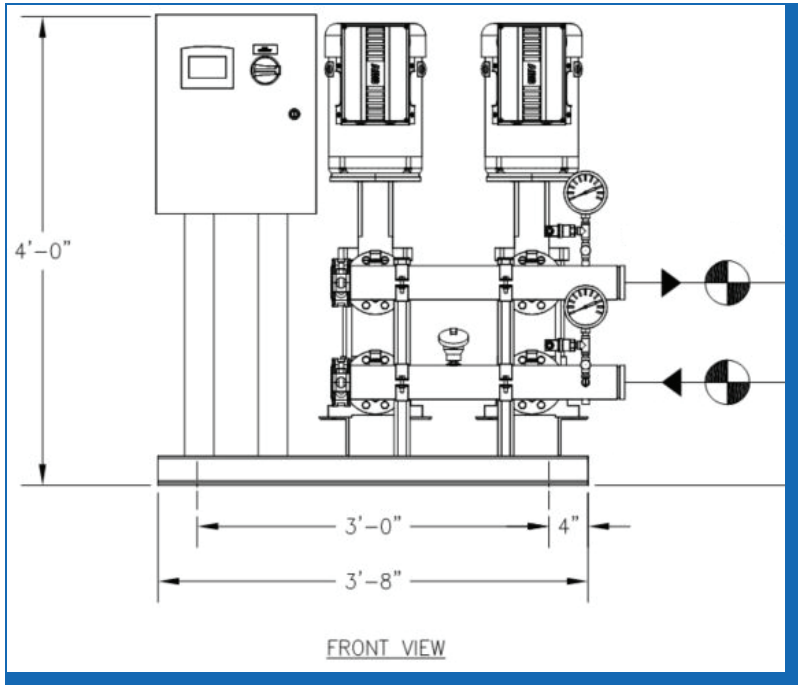
All packages come standard with an Aqualogic nW pressure booster panel with 4.3" color touchscreen HMI and integral PLC, standard BACnet MS/TP communications interface, single point power connection, no demand shut down control, dynamic set point adjustment (DSA) controls.

Systems are available in (208-230V)/3Ph from 2HP to 5HP and are available in 460V/3Ph from 2HP to 10HP. Contact FlowTherm Systems for any custom configuration.

Booster Performance



Dimension Drawings



ECM BOOSTER DETAILS

Model Duplex/Triplex	Pump	HP	Check Valve [Inch]	Header {Triplex}	Operating Weight {Triplex}	FLA ¹ {Triplex}	FLA ¹ {Triplex}
				[Inch]	[Lbs.]	208/230V/3ph	460V/3Ph
2-1 nW 3-1 nW	5eSV-7	2	2	2.5	640 {860}	10.5 / 9.6 {15.3 / 13.9}	5.4 {7.6}
2-2 nW 3-2 nW	5eSV-10	3	2	2.5	660 {900}	15.2 / 15.6 {22.2 / 22.9}	8 {11.5}
2-3 nW 3-3 nW	10eSV-6	5	2	2.5 {3}	730 {1120}	24 / 22 {33.5 / 32.5}	11.6 {16.9}
2-4 nW 3-4 nW	10eSV-9	7.5	2	2.5 {3}	830 {1230}	N/A	18.4 {27.1}
2-5 nW 3-5 nW	15eSV-2	5	2	3 {4}	750 {1080}	24 / 22 {33.5 / 32.5}	11.6 {16.9}
2-6 nW 3-6 nW	15eSV-4	7.5	2	3 {4}	810 {1190}	N/A	18.4 {27.1}
2-7 nW 3-7 nW	15eSV-5	10	2	3 {4}	880 {1240}	N/A	23 {34}

¹ Booster full load amperage based on 3500 RPM TEPE motors

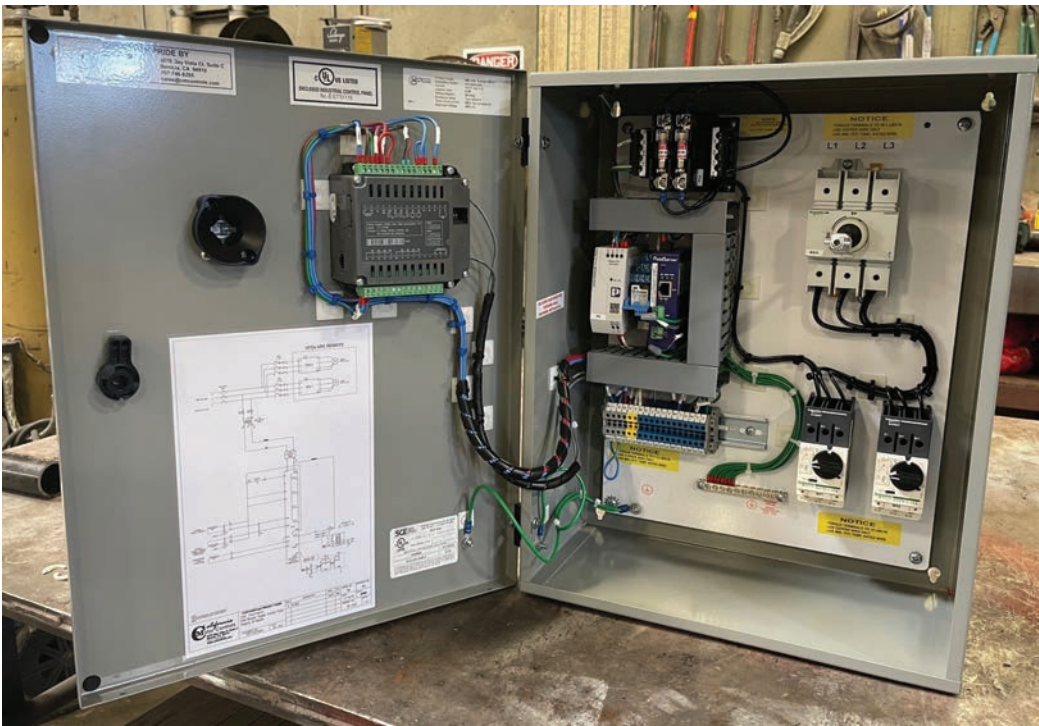
ECM BOOSTER DIMENSIONS

Model	Booster		Bolt Pattern		Header Elevation		Center to Center
	Width	Depth	Width	Depth	Suction	Discharge	
FMV2-1 ECM	44	30	36	28	10	16.5	6.5
FMV2-2 ECM	44	30	36	28	10	19.5	9.5
FMV2-3 ECM	44	30	36	28	10.5	18.5	8
FMV2-4 ECM	44	30	36	28	10.5	22.25	11.75
FMV2-5 ECM	44	30	36	28	10.5	18.875	8.375
FMV2-6 ECM	44	30	36	28	10.5	18.875	8.375
FMV2-7 ECM	44	30	36	28	10.5	20.75	10.25
FMV3-1 ECM	60	30	52	28	10	16.5	6.5
FMV3-2 ECM	60	30	52	28	10	19.5	9.5
FMV3-3 ECM	60	30	52	28	10.5	18.5	8
FMV3-4 ECM	60	30	52	28	10.5	22.25	11.75
FMV3-5 ECM	60	30	52	28	10.5	18.875	8.375
FMV3-6 ECM	60	30	52	28	10.5	18.875	8.375
FMV3-7 ECM	60	30	52	28	10.5	20.75	10.25

Aqualogic nW Control Pressure Booster Panel

The Aqualogic nW Pressure Booster Panel has the following features and benefits:

- 4.3" Color Touch Screen HMI with integral PLC to provide easy access to view system operation and adjust pressure booster system pressure and alarm set points.
- Single point system power connection, non-fused
- Adjustable Alarm/Shutdown
- High System Pressure
- High and Low Suction Pressure
- High Temperature
- Transducer Failure
- General Fault dry contacts for remote monitoring
- Energy saving no demand shutdown control
- BACnet MS/TP Communications Standard
- Dynamic Setpoint Adjustment (DSA) – Allows main pressure sensor to be installed in the system discharge header vs. hard wired from a remote location
- UL 508A Listed industrial control panel NEMA 1/NEMA 3R.



The Benefits of FlowTherm Systems

More than ever before, mechanical engineers, owners, and contractor are choosing FlowTherm Systems packaged equipment because of the benefits they provide. We understand that time is money, accuracy is key, and a happy customer makes for better business on all fronts. Here are just a few of the benefits of using FlowTherm Systems in your projects.

BENEFITS

- Up-front cost assurance eliminates unknown labor costs when compared to field installed components
- Single source responsibility for start-up and warranty issues
- Minimized field coordination issues and field labor
- Rugged structural steel platforms easily rigged and installed at the job site
- High-quality system construction that exceeds national code requirements
- Confidence in dealing with an established company with a long track record of customer satisfaction
- Complete customer support including full submittals, drawings, and O&M instructions in addition to layout and application assistance throughout the project
- Flow testing capabilities on site.
- Guaranteed system performance
- Experienced application assistance
- Assurance of matched and compatible system components
- Equipment manufactured to ASME/ANSI standards
- UL 3rd party certification for quality assurance on all packaged systems
- High quality components installed in accordance with industry standards and manufacturers' recommendations
- Professional AutoCAD and 3D drawings provided with accurate dimensions and weights
- Flexible system configurations and options for custom requirments
- Extensive selection of standard configured packages



Our Catalog of Custom Packages

FlowTherm Systems offers an extensive array of packaged pumping and heat transfer application systems. All of our systems include high quality components, valves, piping, and fittings; assembled and mounted on a structural steel frame. All electrical controls and wiring can be included with our systems.

Hydronic Heating System



Heat Transfer System



Process Cooling



**Electronic Tempering
Valve Station**



Water Source Heat Pump



Pump System



Questions? We're ready to help

FlowTherm Systems™ has a highly trained staff of representatives, designers and engineers who can help you find the best system for your mechanical, plumbing and industrial projects.

Contact Us: FlowTherm Systems | 2293 Tripaldi Way | Hayward, CA 94545 (510) 293-1993 | www.flowtherm.com